

Appendix E - Environmental Justice

ENVIRONMENTAL JUSTICE REPORT FOR THE KY 9 WIDENING STUDY BRACKEN, CAMPBELL, MASON, and PENDLETON COUNTIES

INTRODUCTION

This report presents a review of the community and environmental conditions existing in and around the proposed KY 9 improvements in Bracken, Campbell, Mason, and Pendleton Counties in Kentucky. The data in this report was collected from a number of sources, including the U.S. Census Bureau, local elected officials, local stakeholders, and local residents. The information and data in this report is intended to aid the Kentucky Transportation Cabinet (KYTC) and others in engaging all groups potentially impacted by this project.

According to the U.S. Environmental Protection Agency (EPA), “the goal of environmental justice is to ensure that all people, regardless of race, national origin or income, are protected from disproportionate impacts of environmental hazards.” Environmental justice communities include minorities and/or low-income groups.

METHODOLOGY

Data was collected by reviewing the Census Data, conducting interviews, and conducting field reviews. All data was then compiled and analyzed to develop this report. The population and race Census Data used in this report were taken from the following sources:

- Profiles of General Demographic Characteristics 2000 Census of Population and Housing Kentucky
- Census 2000 Population by Race and Hispanic Origin for Census Blocks
- U.S. Census State and County Quick Facts

For the purposes of income analysis, 1990 data was used since 2000 data was unavailable. Interviews and field surveys did not reveal any minority or low-income groups in the project area. That information was substantiated by the findings from the Census data and is discussed in the Census Data section.

INITIAL FINDINGS

Businesses/Organizations

There are three (3) businesses located in the KY 9 study area: a bank, a martial arts studio and a convenience store/gas station. Heading westbound from Mason County, this is the only gas available along the corridor for thirty (30) miles. There are no churches or schools located in the study area. There is an industrial park, but no tenants currently occupy it. No complaints were received regarding traffic problems in these areas, although the area near the convenience store experiences a high rate of crashes.

Residences

Depending on the design alternative chosen, anywhere from zero (0) to ninety-five (95) residences and zero (0) to one (1) business may need to be purchased for construction. With careful alternative selection, taking of most of the residences and the one business along the corridor for construction might be avoided.

Communities

No other communities, towns, neighborhoods and associated facilities, and community centers are within the project area.

CENSUS DATA

Since this project would impact four (4) counties, the census data section will be separated by county.

MASON COUNTY

Mason County is divided into twenty-five (25) Census Tracts and the project area is composed of 14 Census Blocks. The KY 9 improvement project in Mason County is located in one tract. See **Figure 1**.

The data on minorities, poverty rates, and age are shown in **Tables 1, 2, and 3**, respectively. Census data on minorities was available at the Census Tract and Census Block levels. However, Census data for poverty rates and age were only available at the county level. Key characteristics from the 1990 Census data for Mason County are as follows:

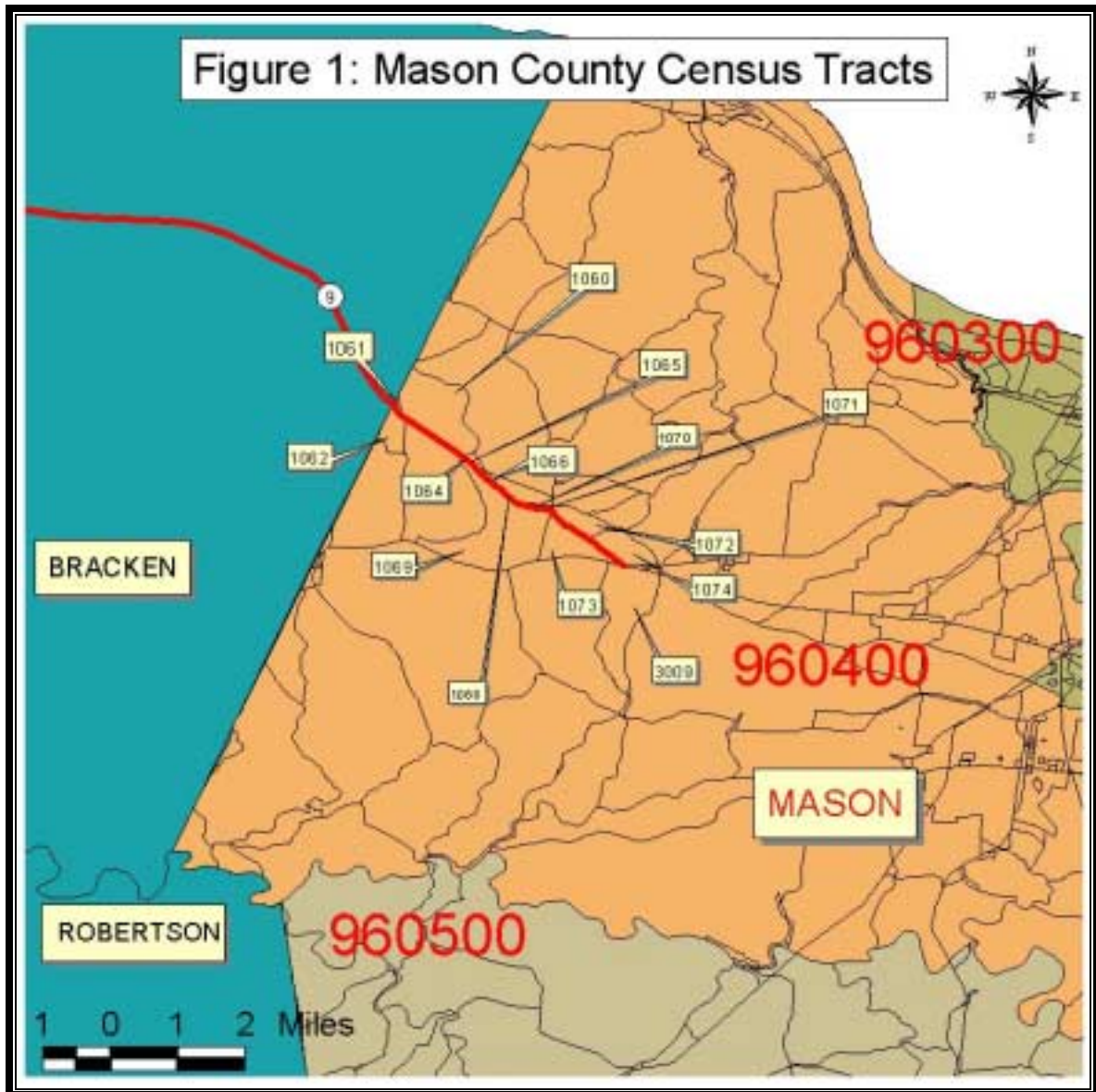
Population by Race

- Mason County is predominantly a white community (over 90%). There are very few members of other races and no concentration of members of any race, including Hispanics, in the study area.
- The percentages of most minority groups were at or below the Commonwealth percentages. The percentage of Hispanics in the county was almost twice the percentage of those for the Commonwealth, indicating a high percentage of Hispanic population outside the study area.

Poverty Rate and Age Groups

- Poverty rates for the county were 0.88% above those for the Commonwealth.
- Children in poverty were 3.39% higher for the county than the Commonwealth and although female headed households in poverty were 2.16% lower than the Commonwealth.
- Mason County has a 3% greater percentage of population of persons over 65 years of age than the Commonwealth but persons over 65 in poverty were 3.32% lower than those for the Commonwealth.
- The percent population of children aged 0-18 was 1.92% greater than those from the Commonwealth.
- Northwestern Mason County is a rural county with numerous employment centers.

Figure 1: Mason County Census Tracts



MASON COUNTY DATA

YEAR 2000 POPULATION BY RACE COMPARISON CHART

TABLE 1	Total Population	White Alone	% of Population	Black or African- American only	% of Population	American Indian or Alaska Native Alone	% of Population	Asian Alone	% of Population	Native Hawaiian & Other Pacific Islander Alone	% of Population	Hispanic or Latino Alone	% of Population	Some Other Race(s)	% of Population
TRACT 9604, BLOCK 1060	25	25	100.00%	0	0.00%	0	0.00%	0	0.00%	0	0.00%	0	0.00%	0	0.00%
TRACT 9604, BLOCK 1062	3	2	66.67%	1	33.33%	0	0.00%	0	0.00%	0	0.00%	0	0.00%	0	0.00%
TRACT 9604, BLOCK 1063	14	14	100.00%	0	0.00%	0	0.00%	0	0.00%	0	0.00%	0	0.00%	0	0.00%
TRACT 9604, BLOCK 1064	0	0	0.00%	0	0.00%	0	0.00%	0	0.00%	0	0.00%	0	0.00%	0	0.00%
TRACT 9604, BLOCK 1065	0	0	0.00%	0	0.00%	0	0.00%	0	0.00%	0	0.00%	0	0.00%	0	0.00%
TRACT 9604, BLOCK 1066	0	0	0.00%	0	0.00%	0	0.00%	0	0.00%	0	0.00%	0	0.00%	0	0.00%
TRACT 9604, BLOCK 1067	4	4	100.00%	0	0.00%	0	0.00%	0	0.00%	0	0.00%	0	0.00%	0	0.00%
TRACT 9604, BLOCK 1068	0	0	0.00%	0	0.00%	0	0.00%	0	0.00%	0	0.00%	0	0.00%	0	0.00%
TRACT 9604, BLOCK 1069	46	46	100.00%	0	0.00%	0	0.00%	0	0.00%	0	0.00%	0	0.00%	0	0.00%
TRACT 9604, BLOCK 1070	5	5	100.00%	0	0.00%	0	0.00%	0	0.00%	0	0.00%	0	0.00%	0	0.00%
TRACT 9604, BLOCK 1071	0	0	0.00%	0	0.00%	0	0.00%	0	0.00%	0	0.00%	0	0.00%	0	0.00%
TRACT 9604, BLOCK 1072	2	2	100.00%	0	0.00%	0	0.00%	0	0.00%	0	0.00%	0	0.00%	0	0.00%
TRACT 9604, BLOCK 1073	42	41	97.62%	0	0.00%	0	0.00%	0	0.00%	0	0.00%	0	0.00%	1	2.38%
TRACT 9604, BLOCK 1074	17	16	94.12%	1	0.00%	0	0.00%	0	0.00%	0	0.00%	0	0.00%	0	0.00%
Mason County	16,800	15,268	90.88%	1,203	7.16%	25	0.15%	62	0.37%	3	0.02%	160	0.95%	96	0.57%
KENTUCKY	4,041,769	3,640,889	90.08%	295,994	7.32%	8,616	0.21%	29,744	0.74%	1,460	0.04%	22,623	0.56%	22,623	0.56%

YEAR 1990 POVERTY RATE COMPARISON CHART

TABLE 2	Total Persons in Poverty*	Total Persons in Poverty**	Children 0-17	Children 0-17 in Poverty	% of Children 0-17 in Poverty	Female Headed Households	Female Headed Households in Poverty	% of Female Headed Households in Poverty	Persons 65+	Persons 65+ in Poverty	% of Persons 65+ in Poverty
Mason County	2,982	17.75%	4,165	1,160	27.85%	421	242	57.48%	2,591	448	17.29%
KENTUCKY	681,827	16.87%	938,325	229,530	24.46%	86,390	51,519	59.64%	441,885	91,091	20.61%

* 1989 numbers

* 1997 model based estimate

YEAR 2000 AGE GROUP COMPARISON CHART

TABLE 3	Population	0-18	% of Population	19-64	% of Population	65-older	% of Population
Mason County	16,800	4,456	26.52%	9,740	57.98%	2,604	15.50%
KENTUCKY	4,041,769	994,818	24.60%	2,542,158	62.90%	504,793	12.50%

BRACKEN COUNTY

Bracken County is divided into three (3) Census Tracts and the project area is composed of sixty-six (66) Census Blocks. KY 9 improvement project in Bracken County is located in all 3 tracts. See **Figure 2**.

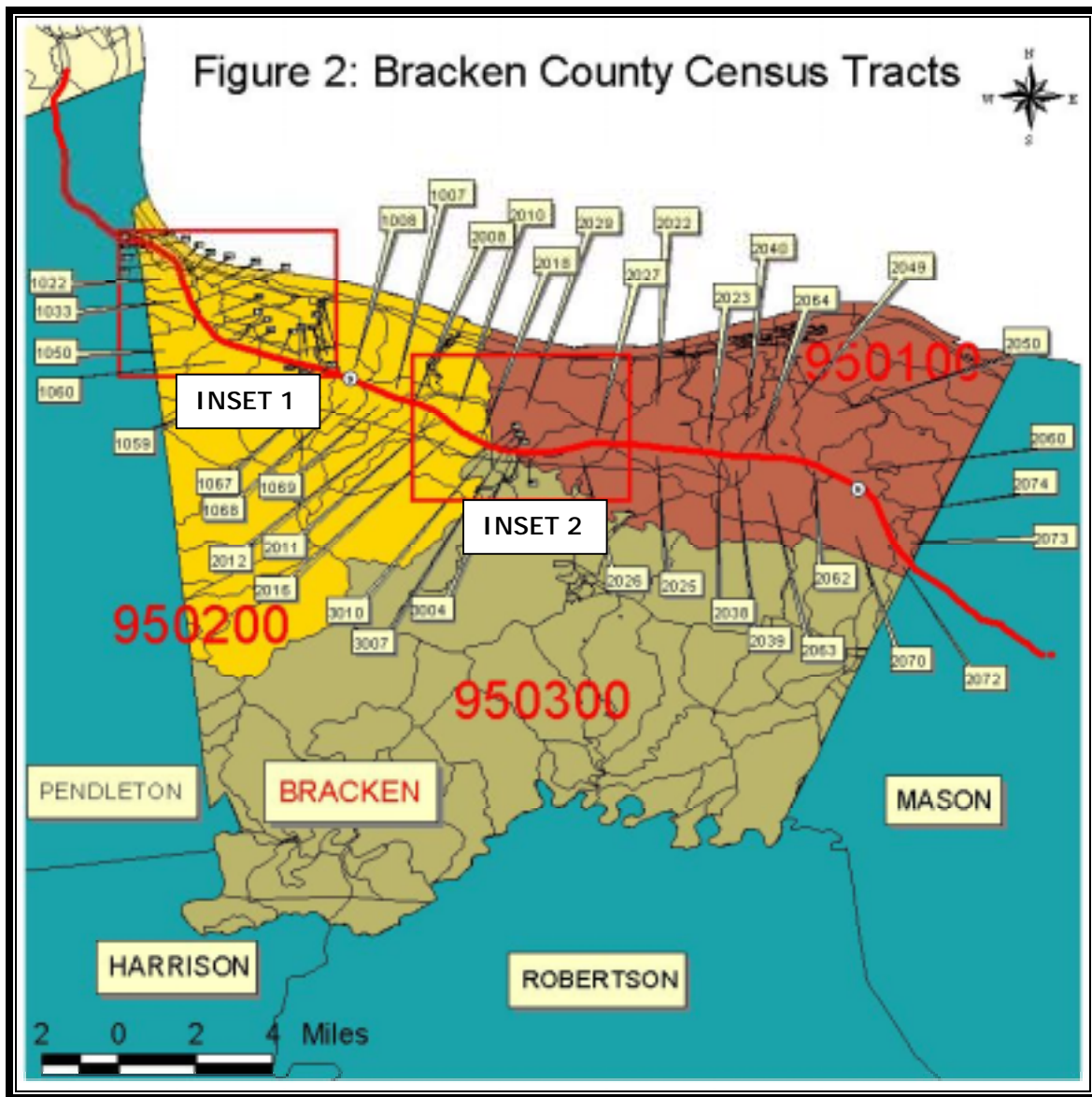
The data on minorities, poverty rates, and age are shown in **Tables 1, 2, and 3**, respectively. Census data on minorities was available at the Census Tract and Census Block levels. However, Census data for poverty rates and age were only available at the county level. Key characteristics from the 1990 Census data for Mason County are as follows:

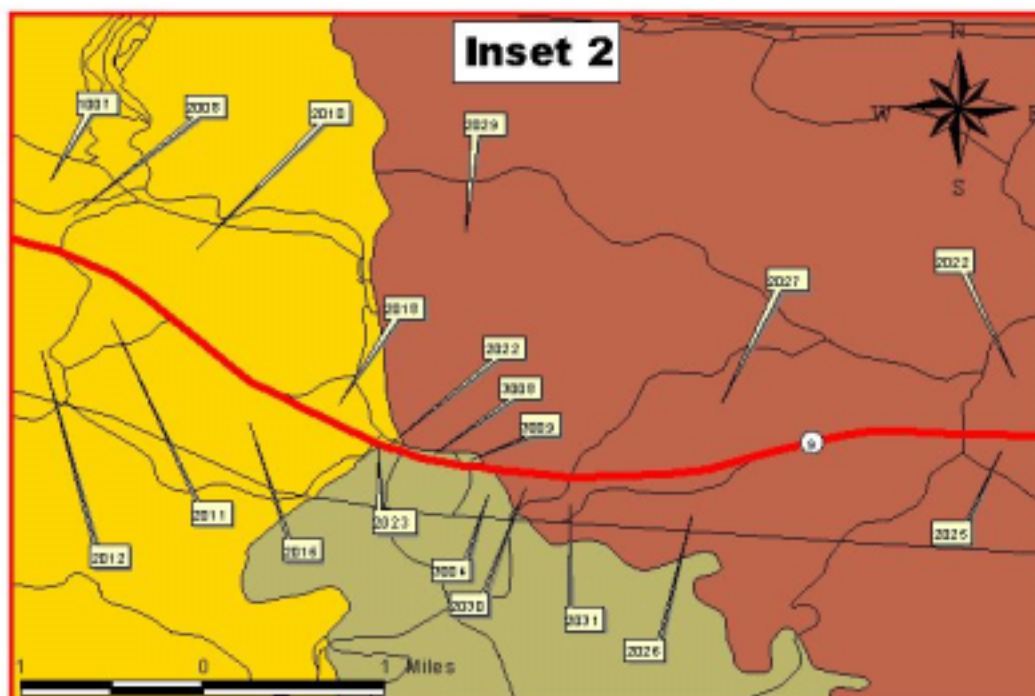
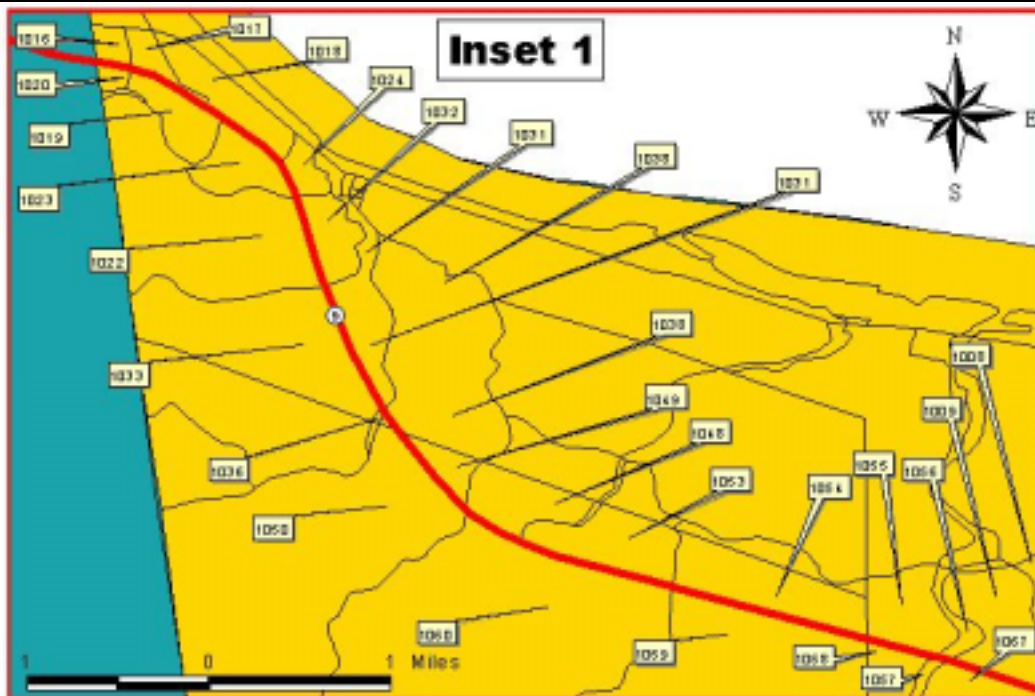
Population by Race

- Bracken County is predominantly a white community (over 98%). There are very few members of other races and no concentration of members of any race, including Hispanics, in the study area.
- The percentages of all other minority groups except American Indian/Alaska Natives were below the Commonwealth percentages.
- The American Indian/Alaska Native group was 0.04% higher in Bracken County than in the state.

Poverty Rate and Age Groups

- Poverty rates for the county were 1.80% below those for the Commonwealth.
- Children in poverty were 1.57% higher for the county than the Commonwealth and female headed households in poverty were almost 6% higher than the Commonwealth. The population percentage of children in the county was 3.57% higher than the number in the Commonwealth.
- Bracken County has nearly 1% greater percentage of population of persons over 65 years of age than the Commonwealth but persons over 65 in poverty were 3.51% higher than those for the Commonwealth.
- Bracken County is a rural county with no major employment centers.





BRACKEN COUNTY DATA

YEAR 2000 POPULATION BY RACE COMPARISON CHART

TABLE 1															
	Total Population	White Alone	% of Population	Black or African- American only	% of Population	American Indian or Alaska Native Alone	% of Population	Asian Alone	% of Population	Native Hawaiian & Other Pacific Islander Alone	% of Population	Hispanic or Latino Alone	% of Population	Some Other Race(s)	% of Population
TRACT 9501, BLOCK 2022	48	48	100.00%	0	0.00%	0	0.00%	0	0.00%	0	0.00%	0	0.00%	0	0.00%
TRACT 9501, BLOCK 2023	18	18	100.00%	0	0.00%	0	0.00%	0	0.00%	0	0.00%	0	0.00%	0	0.00%
TRACT 9501, BLOCK 2025	11	11	100.00%	0	0.00%	0	0.00%	0	0.00%	0	0.00%	0	0.00%	0	0.00%
TRACT 9501, BLOCK 2026	18	18	100.00%	0	0.00%	0	0.00%	0	0.00%	0	0.00%	0	0.00%	0	0.00%
TRACT 9501, BLOCK 2027	27	26	96.30%	0	0.00%	0	0.00%	1	3.70%	0	0.00%	0	0.00%	0	0.00%
TRACT 9501, BLOCK 2029	52	48	92.31%	0	0.00%	4	7.69%	0	0.00%	0	0.00%	0	0.00%	0	0.00%
TRACT 9501, BLOCK 2030	3	3	100.00%	0	0.00%	0	0.00%	0	0.00%	0	0.00%	0	0.00%	0	0.00%
TRACT 9501, BLOCK 2031	0	0	0.00%	0	0.00%	0	0.00%	0	0.00%	0	0.00%	0	0.00%	0	0.00%
TRACT 9501, BLOCK 2038	0	0	0.00%	0	0.00%	0	0.00%	0	0.00%	0	0.00%	0	0.00%	0	0.00%
TRACT 9501, BLOCK 2039	15	15	100.00%	0	0.00%	0	0.00%	0	0.00%	0	0.00%	0	0.00%	0	0.00%
TRACT 9501, BLOCK 2040	73	73	100.00%	0	0.00%	0	0.00%	0	0.00%	0	0.00%	0	0.00%	0	0.00%
TRACT 9501, BLOCK 2049	50	48	96.00%	0	0.00%	0	0.00%	0	0.00%	0	0.00%	2	4.00%	0	0.00%
TRACT 9501, BLOCK 2050	35	33	94.29%	0	0.00%	0	0.00%	0	0.00%	0	0.00%	2	5.71%	0	0.00%
TRACT 9501, BLOCK 2060	10	10	100.00%	0	0.00%	0	0.00%	0	0.00%	0	0.00%	0	0.00%	0	0.00%
TRACT 9501, BLOCK 2061	0	0	0.00%	0	0.00%	0	0.00%	0	0.00%	0	0.00%	0	0.00%	0	0.00%
TRACT 9501, BLOCK 2062	2	2	100.00%	0	0.00%	0	0.00%	0	0.00%	0	0.00%	0	0.00%	0	0.00%
TRACT 9501, BLOCK 2063	154	150	97.40%	1	0.65%	0	0.00%	0	0.00%	0	0.00%	3	1.95%	0	0.00%
TRACT 9501, BLOCK 2064	0	0	0.00%	0	0.00%	0	0.00%	0	0.00%	0	0.00%	0	0.00%	0	0.00%
TRACT 9501, BLOCK 2070	67	61	91.04%	2	2.99%	0	0.00%	0	0.00%	0	0.00%	0	0.00%	4	5.97%
TRACT 9501, BLOCK 2072	0	0	0.00%	0	0.00%	0	0.00%	0	0.00%	0	0.00%	0	0.00%	0	0.00%
TRACT 9501, BLOCK 2073	0	0	0.00%	0	0.00%	0	0.00%	0	0.00%	0	0.00%	0	0.00%	0	0.00%
TRACT 9501, BLOCK 2074	15	15	100.00%	0	0.00%	0	0.00%	0	0.00%	0	0.00%	0	0.00%	0	0.00%
TRACT 9502, BLOCK 1007	7	7	100.00%	0	0.00%	0	0.00%	0	0.00%	0	0.00%	0	0.00%	0	0.00%
TRACT 9502, BLOCK 1008	14	14	100.00%	0	0.00%	0	0.00%	0	0.00%	0	0.00%	0	0.00%	0	0.00%
TRACT 9502, BLOCK 1009	0	0	0.00%	0	0.00%	0	0.00%	0	0.00%	0	0.00%	0	0.00%	0	0.00%
TRACT 9502, BLOCK 1016	0	0	0.00%	0	0.00%	0	0.00%	0	0.00%	0	0.00%	0	0.00%	0	0.00%
TRACT 9502, BLOCK 1017	0	0	0.00%	0	0.00%	0	0.00%	0	0.00%	0	0.00%	0	0.00%	0	0.00%
TRACT 9502, BLOCK 1018	0	0	0.00%	0	0.00%	0	0.00%	0	0.00%	0	0.00%	0	0.00%	0	0.00%
TRACT 9502, BLOCK 1019	0	0	0.00%	0	0.00%	0	0.00%	0	0.00%	0	0.00%	0	0.00%	0	0.00%
TRACT 9502, BLOCK 1020	0	0	0.00%	0	0.00%	0	0.00%	0	0.00%	0	0.00%	0	0.00%	0	0.00%
TRACT 9502, BLOCK 1022	30	30	100.00%	0	0.00%	0	0.00%	0	0.00%	0	0.00%	0	0.00%	0	0.00%
TRACT 9502, BLOCK 1023	11	11	100.00%	0	0.00%	0	0.00%	0	0.00%	0	0.00%	0	0.00%	0	0.00%
TRACT 9502, BLOCK 1024	3	3	100.00%	0	0.00%	0	0.00%	0	0.00%	0	0.00%	0	0.00%	0	0.00%
TRACT 9502, BLOCK 1031	5	5	100.00%	0	0.00%	0	0.00%	0	0.00%	0	0.00%	0	0.00%	0	0.00%
TRACT 9502, BLOCK 1032	5	5	100.00%	0	0.00%	0	0.00%	0	0.00%	0	0.00%	0	0.00%	0	0.00%
TRACT 9502, BLOCK 1033	0	0	0.00%	0	0.00%	0	0.00%	0	0.00%	0	0.00%	0	0.00%	0	0.00%
TRACT 9502, BLOCK 1036	0	0	0.00%	0	0.00%	0	0.00%	0	0.00%	0	0.00%	0	0.00%	0	0.00%
TRACT 9502, BLOCK 1037	6	6	100.00%	0	0.00%	0	0.00%	0	0.00%	0	0.00%	0	0.00%	0	0.00%
TRACT 9502, BLOCK 1038	35	35	100.00%	0	0.00%	0	0.00%	0	0.00%	0	0.00%	0	0.00%	0	0.00%
TRACT 9502, BLOCK 1048	0	0	0.00%	0	0.00%	0	0.00%	0	0.00%	0	0.00%	0	0.00%	0	0.00%
TRACT 9502, BLOCK 1049	8	8	100.00%	0	0.00%	0	0.00%	0	0.00%	0	0.00%	0	0.00%	0	0.00%
TRACT 9502, BLOCK 1050	52	52	100.00%	0	0.00%	0	0.00%	0	0.00%	0	0.00%	0	0.00%	0	0.00%
TRACT 9502, BLOCK 1053	15	15	100.00%	0	0.00%	0	0.00%	0	0.00%	0	0.00%	0	0.00%	0	0.00%

TRACT 9502, BLOCK 1054	6	6	100.00%	0	0.00%	0	0.00%	0	0.00%	0	0.00%	0	0.00%	0	0.00%
TRACT 9502, BLOCK 1055	0	0	0.00%	0	0.00%	0	0.00%	0	0.00%	0	0.00%	0	0.00%	0	0.00%
TRACT 9502, BLOCK 1056	0	0	0.00%	0	0.00%	0	0.00%	0	0.00%	0	0.00%	0	0.00%	0	0.00%
TRACT 9502, BLOCK 1057	0	0	0.00%	0	0.00%	0	0.00%	0	0.00%	0	0.00%	0	0.00%	0	0.00%
TRACT 9502, BLOCK 1058	0	0	0.00%	0	0.00%	0	0.00%	0	0.00%	0	0.00%	0	0.00%	0	0.00%
TRACT 9502, BLOCK 1059	35	36	102.86%	0	0.00%	0	0.00%	0	0.00%	0	0.00%	0	0.00%	0	0.00%
TRACT 9502, BLOCK 1060	52	48	92.31%	0	0.00%	2	3.85%	0	0.00%	0	0.00%	2	3.85%	0	0.00%
TRACT 9502, BLOCK 1067	0	0	0.00%	0	0.00%	0	0.00%	0	0.00%	0	0.00%	0	0.00%	0	0.00%
TRACT 9502, BLOCK 1068	40	40	100.00%	0	0.00%	0	0.00%	0	0.00%	0	0.00%	0	0.00%	0	0.00%
TRACT 9502, BLOCK 1069	72	72	100.00%	0	0.00%	0	0.00%	0	0.00%	0	0.00%	0	0.00%	0	0.00%
TRACT 9502, BLOCK 2008	5	5	100.00%	0	0.00%	0	0.00%	0	0.00%	0	0.00%	0	0.00%	0	0.00%
TRACT 9502, BLOCK 2010	3	3	100.00%	0	0.00%	0	0.00%	0	0.00%	0	0.00%	0	0.00%	0	0.00%
TRACT 9502, BLOCK 2011	5	5	100.00%	0	0.00%	0	0.00%	0	0.00%	0	0.00%	0	0.00%	0	0.00%
TRACT 9502, BLOCK 2012	9	9	100.00%	0	0.00%	0	0.00%	0	0.00%	0	0.00%	0	0.00%	0	0.00%
TRACT 9502, BLOCK 2016	7	7	100.00%	0	0.00%	0	0.00%	0	0.00%	0	0.00%	0	0.00%	0	0.00%
TRACT 9502, BLOCK 2018	0	0	0.00%	0	0.00%	0	0.00%	0	0.00%	0	0.00%	0	0.00%	0	0.00%
TRACT 9502, BLOCK 2022	2	2	100.00%	0	0.00%	0	0.00%	0	0.00%	0	0.00%	0	0.00%	0	0.00%
TRACT 9502, BLOCK 2023	2	2	100.00%	0	0.00%	0	0.00%	0	0.00%	0	0.00%	0	0.00%	0	0.00%
TRACT 9503, BLOCK 3004	0	0	0.00%	0	0.00%	0	0.00%	0	0.00%	0	0.00%	0	0.00%	0	0.00%
TRACT 9503, BLOCK 3007	0	0	0.00%	0	0.00%	0	0.00%	0	0.00%	0	0.00%	0	0.00%	0	0.00%
TRACT 9503, BLOCK 3008	3	3	100.00%	0	0.00%	0	0.00%	0	0.00%	0	0.00%	0	0.00%	0	0.00%
TRACT 9503, BLOCK 3009	0	0	0.00%	0	0.00%	0	0.00%	0	0.00%	0	0.00%	0	0.00%	0	0.00%
TRACT 9503, BLOCK 3010	0	0	0.00%	0	0.00%	0	0.00%	0	0.00%	0	0.00%	0	0.00%	0	0.00%
BRACKEN COUNTY	8,279	8,153	98.48%	51	0.62%	21	0.25%	5	0.06%	3	0.04%	39	0.47%	46	0.56%
KENTUCKY	4,041,769	3,640,889	90.08%	295,994	7.32%	8,616	0.21%	29,744	0.74%	1,460	0.04%	22,623	0.56%	22,623	0.56%

YEAR 1990 POVERTY RATE COMPARISON CHART

TABLE 2	Total Persons in Poverty*	Total Persons in Poverty**	Children 0-17	Children 0-17 in Poverty	% of Children 0-17 in Poverty	Female Headed Households	Female Headed Households in Poverty	% of Female Headed Households in Poverty	Persons 65+	Persons 65+ in Poverty	% of Persons 65+ in Poverty
Bracken County	1,290	15.80%	1,986	517	26.03%	128	84	65.63%	1,136	274	24.12%
KENTUCKY	681,827	16.00%	938,325	229,530	24.46%	86,390.00	51,519	59.64%	441,885	91,091	20.61%

* 1989 numbers
* 1997 model based estimate

YEAR 2000 AGE GROUP COMPARISON CHART

TABLE 3	Population	0-18	% of Population	19-64	% of Population	65-older	% of Population
Bracken County	8,279	2,332	28.17%	4,447	53.71%	1,117	13.49%
KENTUCKY	4,041,769	994,818	24.60%	2,542,158	62.90%	504,793	12.50%

PENDLETON COUNTY

Pendleton County is divided into three (3) Census Tracts and the project area is composed of eight (8) Census Blocks. The KY 9 improvement project in Pendleton County is located in one tract. See **Figure 3**.

The data on minorities, poverty rates, and age are shown in **Tables 1, 2, and 3**, respectively. Census data on minorities was available at the Census Tract and Census Block levels. However, Census data for poverty rates and age were only available at the county level. Key characteristics from the 1990 Census data for Pendleton County are as follows:

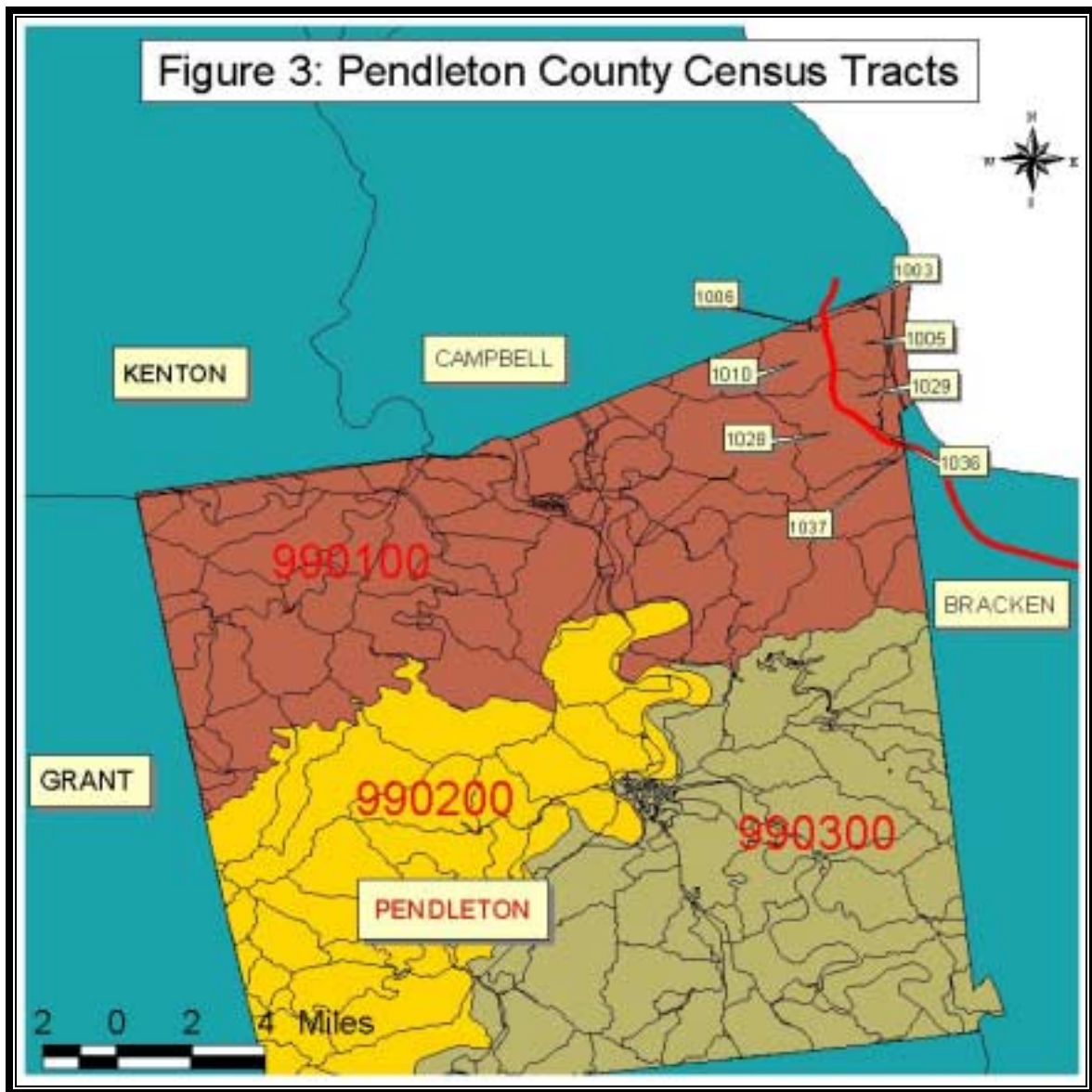
Population by Race

- Pendleton County is predominantly a white community (over 98%). There are very few members of other races and no concentration of members of any race, including Hispanics, in the study area.
- The percentages of all other minority groups, except Hispanics, were below the Commonwealth percentages. The Hispanic percentage for the county was 0.12% greater than those for the Commonwealth.

Poverty Rate and Age Groups

- Poverty rates for the county were 3.4% below those for the Commonwealth.
- Children in poverty were 1.09% higher for the county than the Commonwealth although female headed households in poverty were 15.55% lower than the Commonwealth.
- The percentage of children aged 0-18 in Pendleton County were 6.35% higher than the Commonwealth.
- Pendleton County has a 2.06% less percentage of population of persons over 65 years of age than the Commonwealth but persons over 65 in poverty were 0.56% higher than those for the Commonwealth.
- Pendleton County is a rural county with no major employment centers.

Figure 3: Pendleton County Census Tracts



PENDLETON COUNTY

YEAR 2000 POPULATION BY RACE COMPARISON CHART

TABLE 1	Total Population	White Alone	% of Population	Black or African- American only	% of Population	American Indian or Alaska Native Alone	% of Population	Asian Alone	% of Population	Native Hawaiian & Other Pacific Islander Alone	% of Population	Hispanic or Latino Alone	% of Population	Some Other Race(s)	% of Population
TRACT 9901, BLOCK 1003	29	29	100.00%	0	0.00%	0	0.00%	0	0.00%	0	0.00%	0	0.00%	0	0.00%
TRACT 9901, BLOCK 1005	41	41	100.00%	0	0.00%	0	0.00%	0	0.00%	0	0.00%	0	0.00%	0	0.00%
TRACT 9901, BLOCK 1006	16	16	100.00%	0	0.00%	0	0.00%	0	0.00%	0	0.00%	0	0.00%	0	0.00%
TRACT 9901, BLOCK 1010	227	221	97.36%	0	0.00%	0	0.00%	0	0.00%	0	0.00%	0	0.00%	6	2.64%
TRACT 9901, BLOCK 1028	187	186	99.47%	0	0.00%	0	0.00%	0	0.00%	0	0.00%	0	0.00%	0	0.00%
TRACT 9901, BLOCK 1029	20	20	100.00%	0	0.00%	0	0.00%	0	0.00%	0	0.00%	1	5.00%	0	0.00%
TRACT 9901, BLOCK 1036	0	0	0.00%	0	0.00%	0	0.00%	0	0.00%	0	0.00%	0	0.00%	0	0.00%
TRACT 9901, BLOCK 1037	12	12	100.00%	0	0.00%	0	0.00%	0	0.00%	0	0.00%	0	0.00%	0	0.00%
Pendleton County	14,390	14,159	98.39%	71	0.49%	28	0.19%	16	0.11%	1	0.01%	97	0.67%	51	0.35%
KENTUCKY	4,041,769	3,640,889	90.08%	295,994	7.32%	8,616	0.21%	29,744	0.74%	1,460	0.04%	22,623	0.56%	22,623	0.56%

YEAR 1990 POVERTY RATE COMPARISON CHART

TABLE 2	Total Persons in Poverty*	Total Persons in Poverty**	Children 0-17	Children 0-17 in Poverty	% of Children 0-17 in Poverty	Female Headed Households	Female Headed Households in Poverty	% of Female Headed Households in Poverty	Persons 65+	Persons 65+ in Poverty	% of Persons 65+ in Poverty
Pendleton County	1,938	13.47%	3,417	873	25.55%	254	112	44.09%	1,365	289	21.17%
KENTUCKY	681,827	16.87%	938,325	229,530	24.46%	86,390	51,519	59.64%	441,885	91,091	20.61%

* 1989 numbers

* 1997 model based estimate

YEAR 2000 AGE GROUP COMPARISON CHART

TABLE 3	Population	0-18	% of Population	19-64	% of Population	65+older	% of Population
Pendleton County	14,390	4,454	30.95%	8,434	58.61%	1,502	10.44%
KENTUCKY	4,041,769	994,818	24.60%	2,542,158	62.90%	504,793	12.50%

CAMPBELL COUNTY

Campbell County is divided into twenty-six (26) Census Tracts and the project area is composed of two (2) Census Blocks. The KY 9 improvement project in Campbell County is located in one tract. See **Figure 4**.

The data on minorities, poverty rates, and age are shown in **Tables 1, 2, and 3**, respectively. Census data on minorities was available at the Census Tract and Census Block levels. However, Census data for poverty rates and age were only available at the county level. Key characteristics from the 1990 Census data for Mason County are as follows:

Population by Race

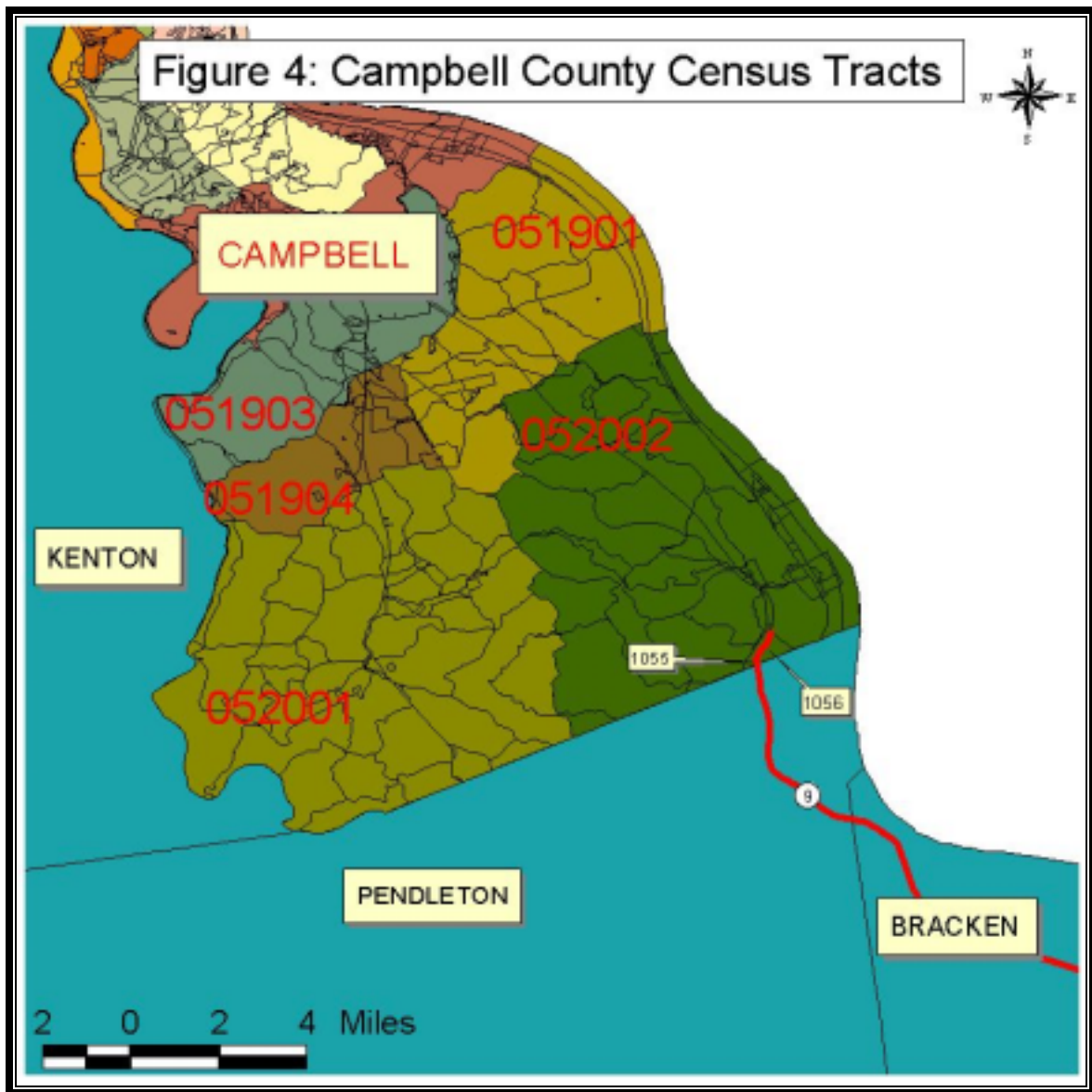
- Campbell County is predominantly a white community (over 96%). There are no members of other races and no concentration of members of any race, including Hispanics, in the study area.

Poverty Rate and Age Groups

- Poverty rates for the county were 7.38% lower than those for the Commonwealth.
- Children in poverty were 8.85% less for the county than the Commonwealth although the percentage of population of children was 4.05% greater than those for the Commonwealth, and female headed households in poverty were 11.93% lower than the Commonwealth.
- Campbell County has a 0.10% greater percentage of population of persons over 65 years of age than the Commonwealth but persons over 65 in poverty were 7.77% lower than those for the Commonwealth.
- Southeastern Campbell County is a rural county with no major employment centers near the corridor.

CONCLUSION

No concentrations of minority or low-income groups are present within the four-county project area. The KY 9 improvements would likely impact residents and businesses. Should a fully controlled facility be constructed, a variety of different interchange configurations should be explored to see how impact to homes and business can be minimized.



CAMPBELL COUNTY DATA

YEAR 2000 POPULATION BY RACE COMPARISON CHART

TABLE 1	Total Population	White Alone	% of Population	Black or African- American only	% of Population	American Indian or Alaska Native Alone	% of Population	Asian Alone	% of Population	Native Hawaiian & Other Pacific Islander Alone	% of Population	Hispanic or Latino Alone	% of Population	Some Other Race(s)	% of Population
TRACT 52002, BLOCK 1055	0	0	0.00%	0	0.00%	0	0.00%	0	0.00%	0	0.00%	0	0.00%	0	0.00%
TRACT 52002, BLOCK 1056	9	9	100.00%	0	0.00%	0	0.00%	0	0.00%	0	0.00%	0	0.00%	0	0.00%
Campbell County	88,616	85,636	96.64%	1,394	1.57%	152	0.17%	475	0.54%	13	0.01%	765	0.86%	272	0.31%
KENTUCKY	4,041,769	3,640,889	90.08%	295,994	7.32%	8,616	0.21%	29,744	0.74%	1,460	0.04%	22,623	0.56%	22,623	0.56%

YEAR 1990 POVERTY RATE COMPARISON CHART

TABLE 2	Total Persons in Poverty*	Total Persons in Poverty**	Children 0-17	Children 0-17 in Poverty	% of Children 0-17 in Poverty	Female Headed Households	Female Headed Households in Poverty	% of Female Headed Households in Poverty	Persons 65+	Persons 65+ in Poverty	% of Persons 65+ in Poverty
Campbell County	8,412	9.49%	22,183	3,462	15.61%	2,318	1,106	47.71%	10,294	1,322	12.84%
KENTUCKY	681,827	16.87%	938,325	229,530	24.46%	86,390	51,519	59.64%	441,885	91,091	20.61%

* 1989 numbers

* 1997 model based estimate

YEAR 2000 AGE GROUP COMPARISON CHART

TABLE 3	Population	0-18	% of Population	19-64	% of Population	65-older	% of Population
Campbell County	88,616	25,387	28.65%	52,064	58.75%	11,165	12.60%
KENTUCKY	4,041,769	994,818	24.60%	2,542,158	62.90%	504,793	12.50%